

# Nantong report

## The second Nantong Japanese-invested Enterprises Roundtable Meeting held

Japan is the most important economic and trade cooperation partner of Nantong. Up to now, Nantong has attracted nearly 500 Japanese-invested enterprises to settle, including a lot of well-known Japanese companies such as Toray, Kawasaki, Mitsubishi, Sumitomo, Asahi Kasei, Daio and Aeon.



By Wu Xiaoyun

On 22nd April, the second Nantong Japanese-invested Enterprises Roundtable Meeting and series of exchange activities were held. Representatives from more than 10 Japanese enterprises organized by Japan Asian Community Culture Cooperation Organization (JACCCO) and people in charge of local enterprises and relevant departments in Nantong gathered together, strengthening friendship and seeking cooperation.

At the event, Nantong Bureau of Commerce introduced in detail the latest policies and support measures of Nantong regarding cooperation with Japan, and addressed in detail the concerns about investment promotion, taxation, import and export and other issues which Japanese enterprises care about. The exchange session was lively. Representatives of Japan Asian Community Culture Cooperation Organization (JACCCO) and representatives of Nantong enterprises

carried out in-depth exchanges on topics such as industry docking, investment needs and cooperation vision. The two parties have reached preliminary agreements in multiple fields.

Japan is the most important economic and trade cooperation partner of Nantong. Up to now, Nantong has attracted nearly 500 Japanese-invested enterprises to settle, including a lot of well-known Japanese companies such as Toray, Kawasaki, Mitsubishi, Sumitomo, Asahi Kasei, Daio and Aeon. They account for 13.1% of the operating foreign-invested enterprises in Nantong. Japanese-invested enterprises have actually invested 5.27 billion U.S. dollars in Nantong, which accounts for 10% of the total amount of actual foreign investment in Nantong.

In 2024, the foreign trade import and export between Nantong and Japan reached 31.57 billion yuan, which accounts for about 8% of the total import and export of Nantong.

## Enterprises from North Rhine-Westphalia carried out exchanges in Nantong

By Wu Xiaoyun

On 23rd April, 'Jiangsu trip for overseas institutions and multinational companies'—North Rhine-Westphalia enterprises visiting Nantong was carried out.

The event was jointly hosted by Nantong Bureau of Commerce and NRW Global Business Trade & Investment Agency. Its aim is to further deepen the cooperation and exchanges between Nantong and North Rhine-Westphalia, Germany in fields including economy, trade, technology, and industry. Senior executives of more than ten German institutions in China, multinational companies and hidden

champion enterprises gathered in Nantong, and carried out in-depth exchanges with people in charge of relevant departments and industrial parks in Nantong.

The cooperation and exchanges between Nantong and North Rhine-Westphalia, Germany have a long history. There have been fruitful economic and trade cooperation achievements. Up to now, Germany has 107 investment projects in Nantong. Among them, global renowned multinational companies such as Bayer and Lanxess in North Rhine-Westphalia have settled in Nantong. Nantong has invested in 24 projects in Germany, and the total investment amount reached 168 million U.S. dollars.

## Busy port



In the first quarter of 2025, Nantong Tonghai Port has completed a total container throughput of 405,312.5 TEUs, and there is an increase of 2.8%. The photo shows the container terminals and stacking yards of Nantong Tonghai Port Area taken on 20th April. Photo by Xu Congjun

## 'Nantong construction companies enter Indonesia' video conference held

By Wu Xiaoyun

On 17th April, Nantong and Ministry of Investment and Downstream Industry of Indonesia held 'Nantong construction companies enter Indonesia' video conference.

At the meeting, the Indonesian side explained in detail the latest construction market policies and

investment opportunities. The focus was on promoting major infrastructure projects such as the new capital in East Kalimantan. Nantong Housing and Urban-Rural Development Bureau introduced the advantages of Nantong construction industry. Several leading enterprises delivered theme speeches. At the interaction section, enterprises from the two parties carried out practical ex-

changes, focusing on project cooperation, technical standards, etc.

Nantong is known as the 'hometown of Chinese construction'. According to the statistics from Nantong Bureau of Commerce, up to now, Nantong enterprises have contracted more than 10 engineering projects in Indonesia and the amount of contracts has exceeded 60 million U.S. dollars.

## Minister of Plantation and Commodities of Malaysia and his delegation visited Nantong

By He Jiayu

On 23rd April, Chan Foong Hin, the Deputy Minister of Plantation and Commodities of Malaysia, and his delegation visited Nantong.

Malaysia is an important country in the global planting industry

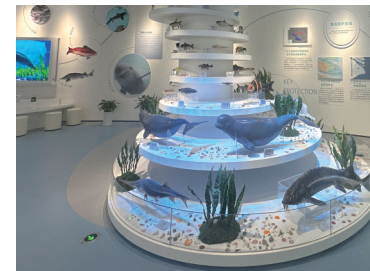
and raw product processing. It has rich experience in aspects such as agricultural technology, resource management and industrial chain integration.

Chan Foong Hin said that China is the second largest market for Malaysian palm oil exports. Teck Guan

Group from Malaysia has invested and built plants in Rugao for nearly twenty years. In the future, they will actively promote the investment information of Malaysia and the investment environment of Nantong, and build a bridge for economic and trade cooperation between Nantong and Malaysia.

### Briefly

#### Nantong Environment Education Center started operation



By Peng Junjun

The first biodiversity-themed experience center in Jiangsu—Nantong Environment Education Center (Nantong Biodiversity Science Popularization and Experience Center) started trial operation on 23rd April.

The center is located in Zilang Park. It is a composite science popularization and education center which integrates theme exhibitions, natural scene and ecological experience.

The venue is open from 9:00 to 17:00 from Wednesday to Sunday (excluding public holidays).

#### Nantong's first tax refund store in a commercial complex runs well

By Si Zhanwei

Recently, State Administration of Taxation of the People's Republic of China published *Announcement on the promotion of the 'buy now, refund now' tax refund service for overseas tourists*. The reporter learnt that the first tax refund store in the commercial complex in Nantong - the Golden Eagle Nantong Center store is running well at present. More than 500 people have gone to the store for consultation. 60 people have completed tax refund procedures. The sales of the involved goods exceeded 300,000 yuan.

## Phase 2 of the Canton Fair opened 46 Nantong enterprises participated

By Wu Xiaoyun

On 23rd April, phase 2 of the 137th China Import and Export Fair opened. Nantong organized 46 high-quality enterprises to participate. In total 62 exhibition booths were set up. Featured products including kitchenware, home decorations, and gardening supplies were exhibited. Among them, innovative products with new processes and new materials became highlights of the fair, and

attracted many international purchasers to negotiate.

At the fair, there were a lot of people in front of the booth of Nan Ya Plastics Industrial (Nantong) Co., Ltd. 'In just half a day since the opening, we received more than 20 purchasers. The effect exceeded expectations.' Zhang Xuebin, who was in charge of the exhibition booth, introduced that the environmentally friendly PVC decorative film researched and developed independently by the company has

attracted a lot of attention from customers from regions including Eastern Europe, South America and the Middle East due to its excellent performance and environmental protection features.

Nantong Yifuyuan Furniture Co., Ltd., which participated in the fair for the first time, achieved a lot. 'On the first day, two orders were successfully signed with customers from Thailand and Philippines.' Fan Jianbin, the person in charge of the enterprise, said.

